



Niukouyu Wetland Park: A Wetland in the City fed by Industrial Wastewater

**Sinopec Yansan Petrochemical
Company (SYPC)**

Contents

1

General situation of Sinopec
Yanshan Petrochemical Company

2

Purpose of the wetland construction

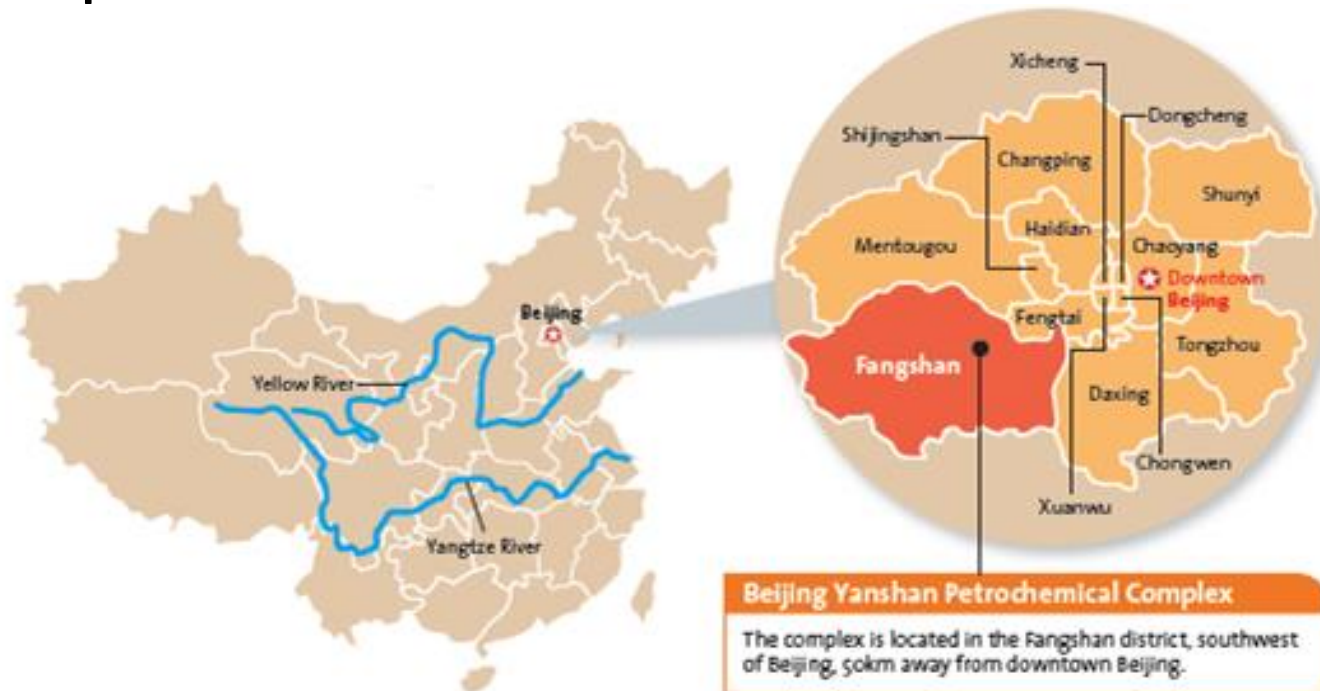
3

Achievements after construction of the wetland

Sinopec Yanshan Petrochemical Company(SYPC)



Established in **1970**, SYPC is **one of the largest subsidiaries of Sinopec**, located 50 km away from downtown Beijing. It has 62 sets of production units and 68 sets of auxiliary units, producing 94 kinds 431 grades of petrochemical products.



Sinopec Yanshan Petrochemical Company(SYPC)



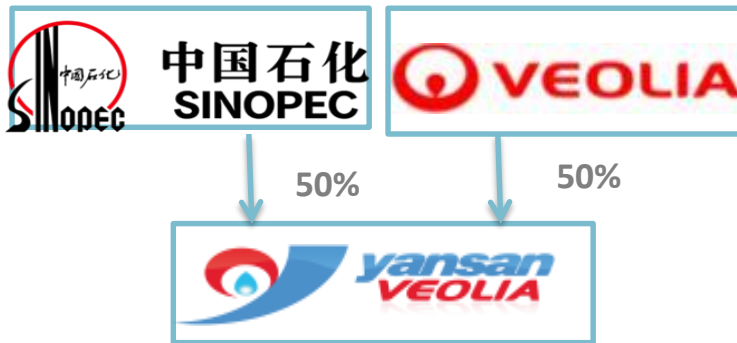
- **10 million tons/year oil refining capacity**
- **The first domestic refining base producing Beijing VI standard refined oil**
- **Leading the oil quality upgrade in China**



- **An important production base for synthetic rubber, synthetic resin and high quality refined oil in Sinopec**
- **800 thousand tons/year ethylene production capacity**

Beijing Yansan Veolia Water Company(BYVW)

Beijing Yanshan Veolia Water Company is a 50-50 joint venture between SYPC and Veolia. Established In 2006, currently it is in charge of water system management.



84,000 m³/d. of industrial wastewater treatment
3,600 m³/d. of domestic waste water treatment
43,000 m³/d. of reclaimed water
5,600,000 m³/d. of recirculated cooling water
40,000 m³/d. of industrial water
74,000 m³/d. of demineralized water
37,700 m³/d. of chilled water



Background of Niukouyu Wetland Project

“ Lucid waters and lush mountains are invaluable assets” *Xi Jinping*

“Air, Water and soil are the 3 pillars of Beautiful China” *Li Keqiang*

Since 2011, new series of laws, regulations and standards are applicable to strengthen environmental protection, particularly focus on Beijing and its Petrochemical Industry.

SYPC regards environmental protection as top priority, and applies the most rigorous management and advanced technology.

The launch of NKY wetland project is a unique reference to reuse industrial compliant effluent to the benefit of local natural ecological environment, driving its industrial compliance responsibility up to the level of ecological protection and social responsibility.

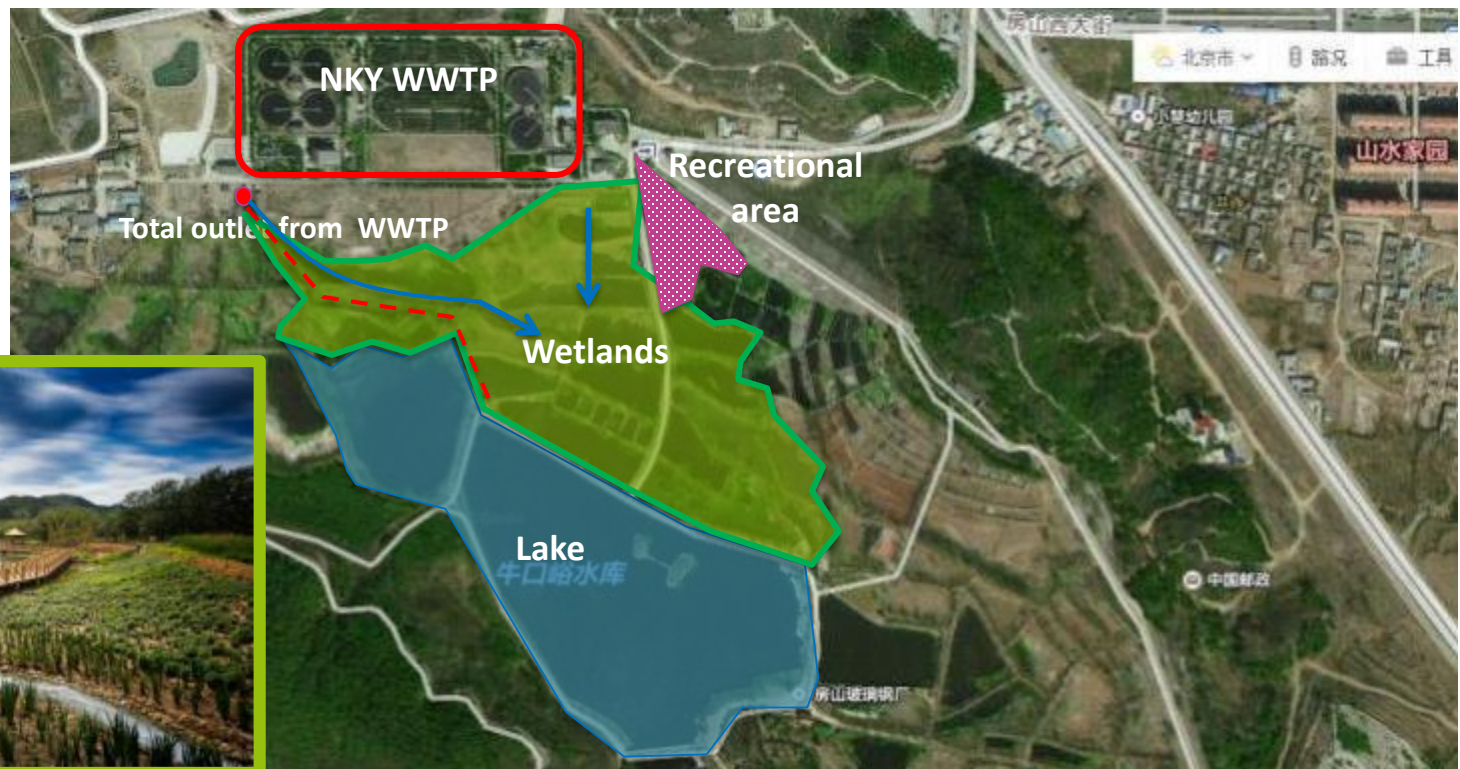
History of Niukouyu Wetland Park

90's: A part of process for treatment purpose

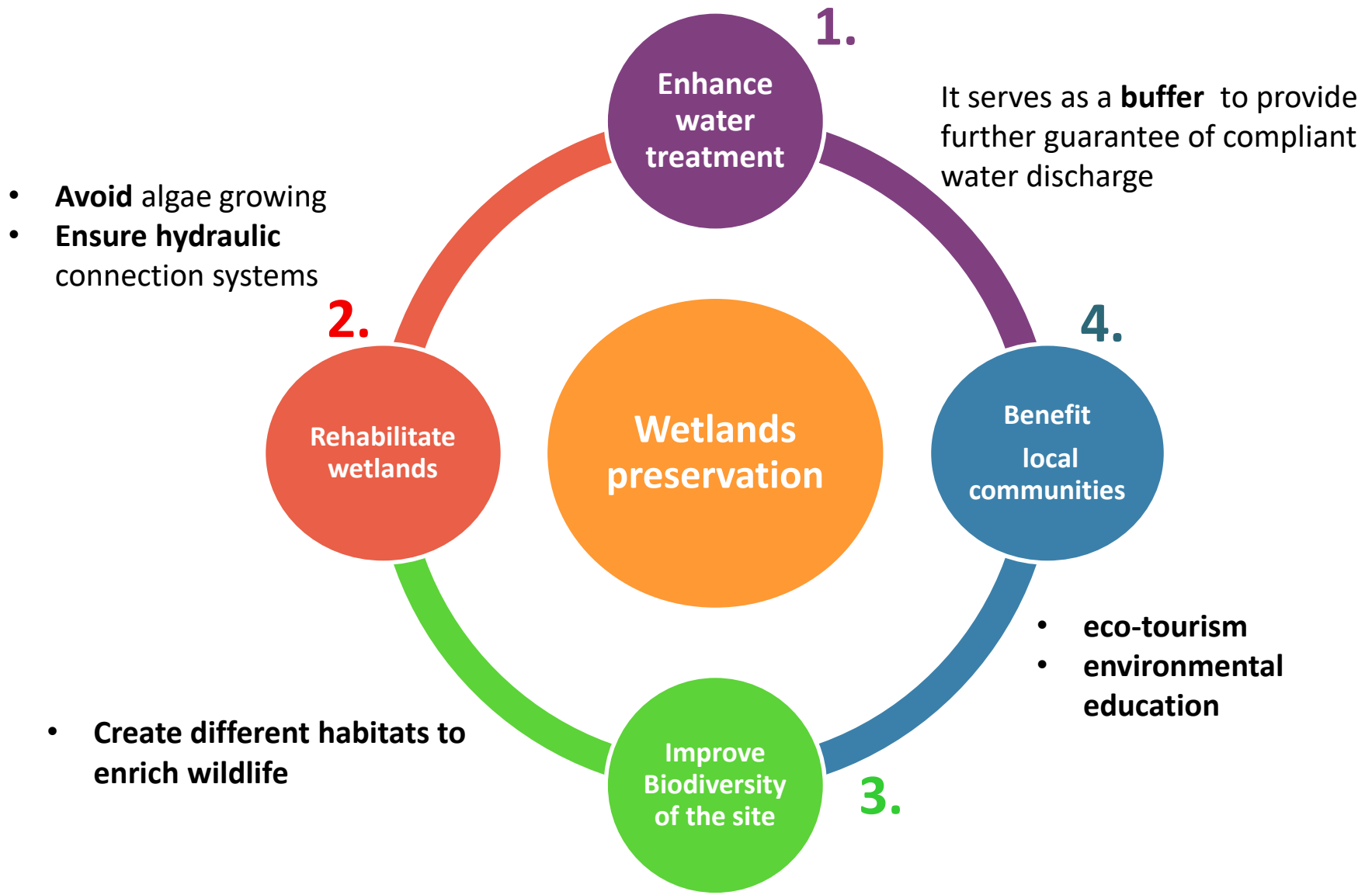
2000's: Storage and adjustment due to the adoption of advanced industrial treatment

2013: Biodiversity study in partnership with Tsinghua University

2017: Rehabilitation of 8 hectare wetlands & 1 hectare recreational area



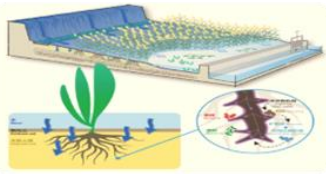
Goals of Niukouyu Wetland Park



Design Concept of Niukouyu Wetland



Have enough water circulation in order to reach proper retention time.



Plants have been carefully selected for their dehydrative value to be effective on the further removal of COD, NH₃ and heavy metals.



Biodiversity is naturally protected and enhanced by increasing habitats with more water banks, wet and dry meadow.

CSR: Giving Back to Local Communities

Design was started in June, 2017, open to public for free on Nov. 1st 2017, well received by many news media friends and visitors.



燕山石化牛口峪湿地公园 正式向公众开放

本报讯（记者 潘福达）位于房山区的燕山石化牛口峪湿地公园一期工程近日竣工，本月起正式向社会公众开放。



在生态文明建设中做靓一篇水文章



在生态文明建设中做靓一篇水文章
——燕山石化牛口峪湿地公园建设纪实
本报记者 王超 通讯员 孙晓宇



牛口峪湿地公园免费开放!

2017-11-27 青森尚山



有一种责任，叫生态文明

2017-11-29 中国石化燕山石化公司

FUN亲们，最近的北京风和透明的天空是不是让大家爽了许多了

“绿水青山，就是金山银山”“生态兴则文明兴，生态衰则文明衰”“绿水青山就是金山银山”



CSR: Visiting Delegation From Officials And Embassy



Beijing EPB Director Mr. FangLi



Veolia CEO Mr. Antoine Frerot



Deputy Head of Fangshan District Mr Zhai Dong



Friends from French Embassy Delegation

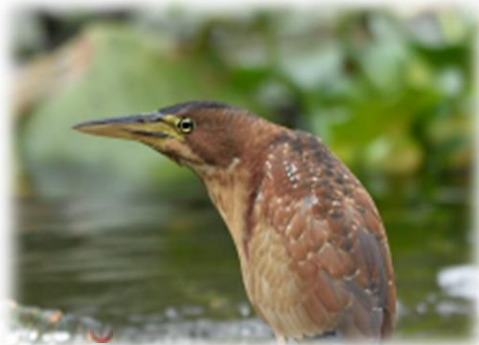
CSR: Local Communities Activity Center

Niukouyu wetland is also local communities activity center ,a very beautiful park, also a popular place for entertainment.



CSR: Biodiversity Improvement

Niukouyu wetland nowadays hosts more than 50 different types of birds including some rare ones. NKY have been recognized as the national kingfisher photograph base, it attracts around 1000 professional photographers from both home and abroad per year.



CSR: Local Communities Activity Center

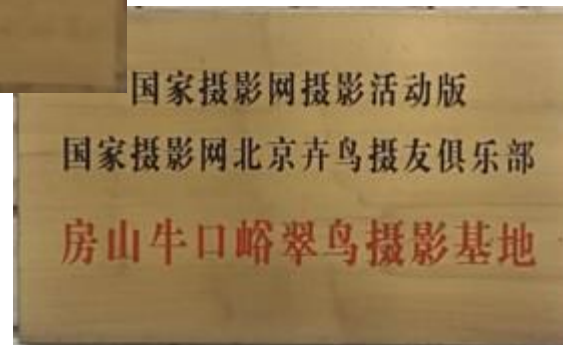
Niukouyu is recognized as school education base and science base in Beijing.



Beijing Juveniles Eco Ethics Education Base



Beijing Students Social Class Resource Unit



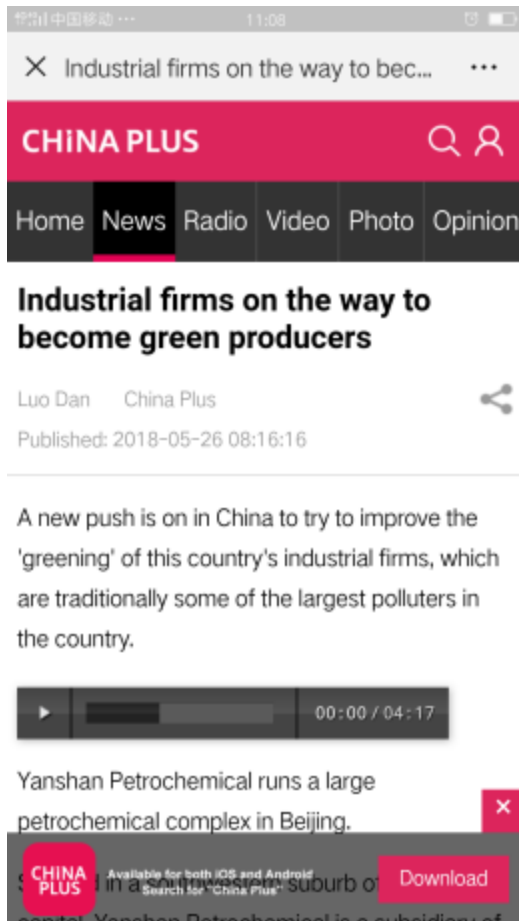
Kingfisher Photography Base



Photography Club

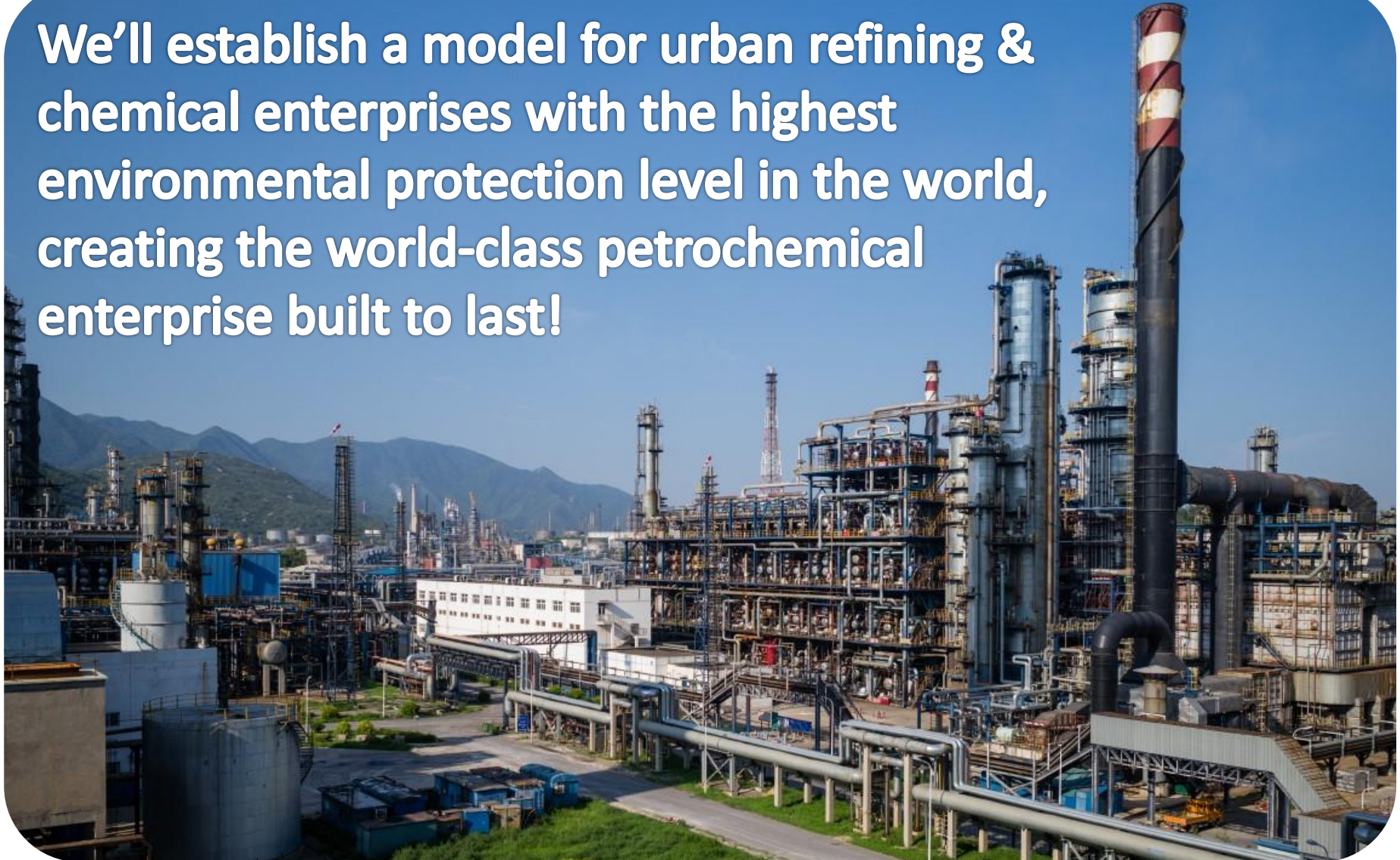


CSR: SASAC and SINOPEC Open Day – a very popular place



SYPC VISION

We'll establish a model for urban refining & chemical enterprises with the highest environmental protection level in the world, creating the world-class petrochemical enterprise built to last!



WELCOME YOU TO SYPC!

Thank you!

燕山石化

燕山石化

